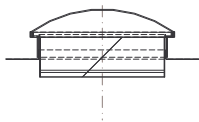


PIERŚCIEŃ GÓRNY - 550



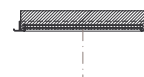
PRZEKRÓJ



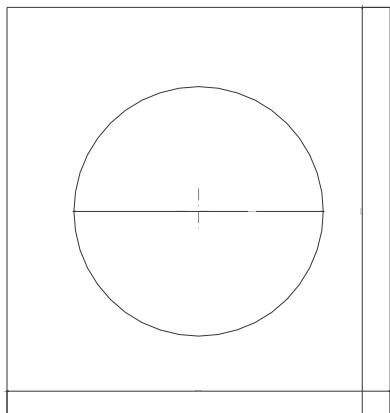
PIERŚCIEŃ DOLNY - 550



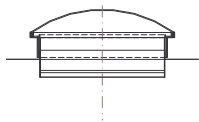
PRZEKRÓJ



PŁYTA Z BLACHY - 550

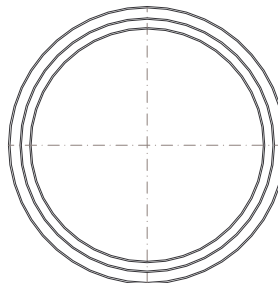


RZUT

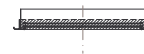


PRZEKRÓJ

RAMA SUFITOWA - 550 + SZYBY

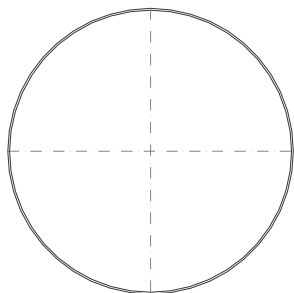


RZUT

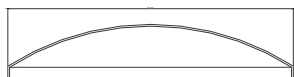
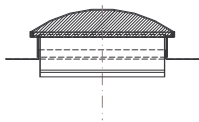


PRZEKRÓJ

KOPUŁA - 550

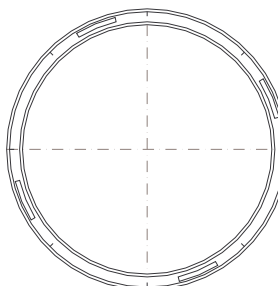


RZUT

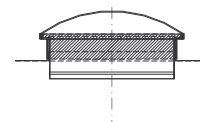


PRZEKRÓJ

RAMA DACHOWA - 550



RZUT



PRZEKRÓJ