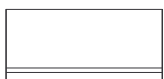
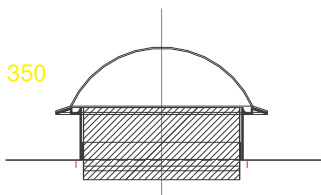


PIERŚCIEŃ GÓRNY - 350



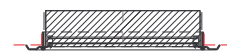
PRZEKRÓJ



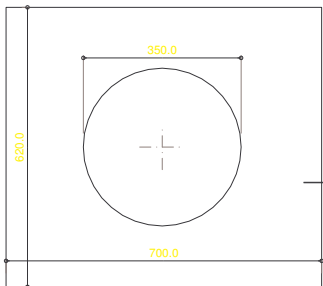
PIERŚCIEŃ DOLNY - 350



PRZEKRÓJ



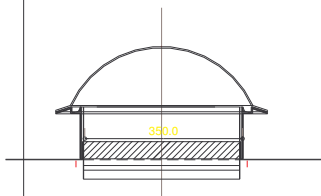
OBRÓBKA BLACHARSKA - 350



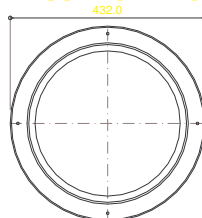
RZUT



PRZEKRÓJ



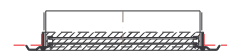
RAMA SUFITOWA - 350 + SZYBY



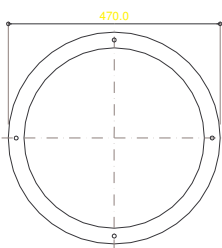
RZUT



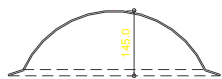
PRZEKRÓJ



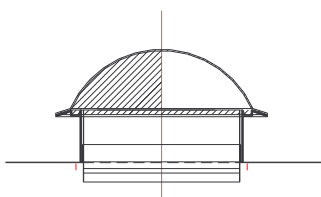
KOPUŁA - 350



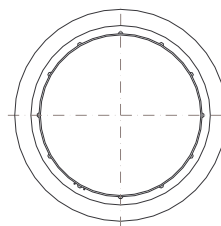
RZUT



PRZEKRÓJ



RAMA GÓRNA - 350



RZUT



PRZEKRÓJ

